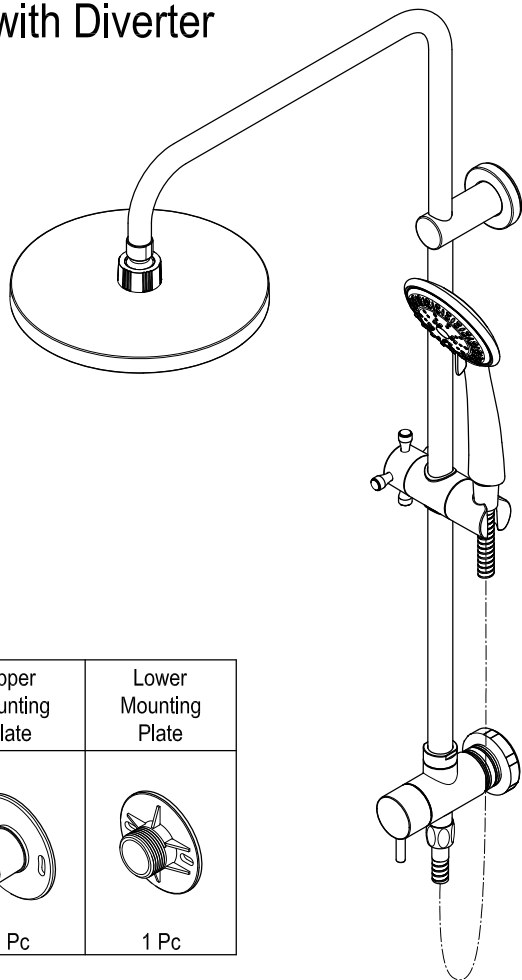


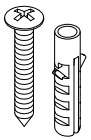


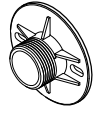
# KINGSTON

KITCHEN & BATH

## INSTALLATION INSTRUCTIONS Rain Shower Riser with Diverter



### Parts:

Mounting Screw & Anchor	Long Nipple & Short Nipple	Upper Mounting Plate	Lower Mounting Plate
			
4 Pcs	1 Pc	1 Pc	1 Pc

www.kingstonbrass.com

TOLL-FREE CUSTOMER SERVICE: 1-877-2-KBRASS

TECHNICAL SUPPORT E-mail: service@kingstonbrass.com

12775 Reservoir Street, Chino, CA 91710

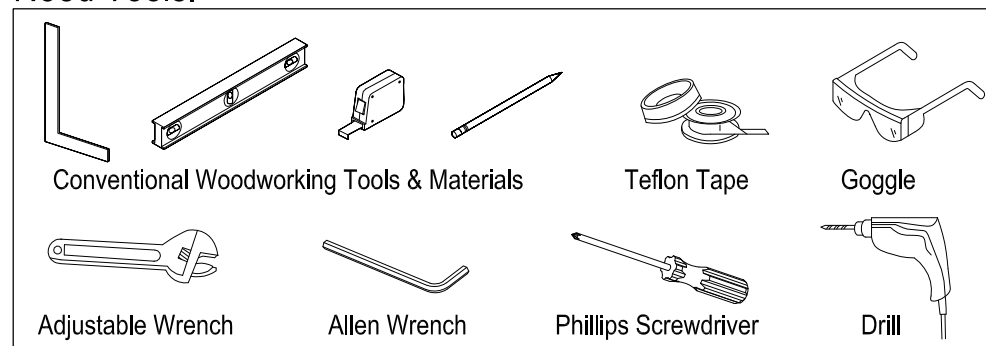
## NOTICE

Failure to follow all directions may cause leaks which may result in water damage

## CAUTION

Failure to follow all installation directions may cause product to detach from the wall and cause serious injury

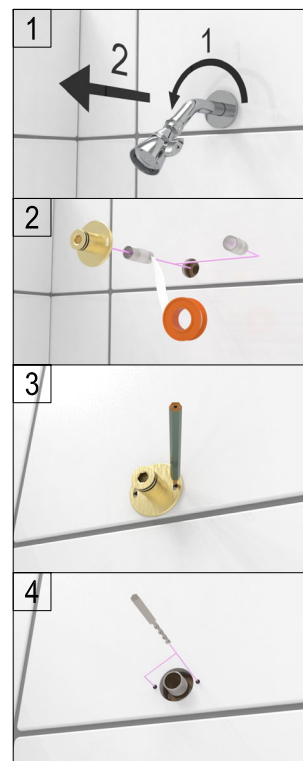
### Need Tools:



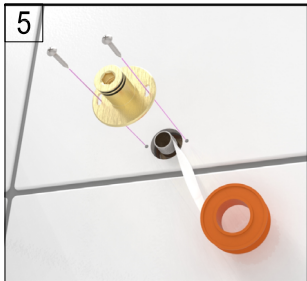
### Before Installation :

- Instruction includes information on proper installation and maintenance. Please read the instructions carefully before installing the products. All mounting parts are included for easy installation.
- Actual product might be slightly different in appearance, but same in structure. For better accuracy, please refer to the actual object.

### Installation Step:



1. Remove the existing shower head and shower arm.
2. Wrap Teflon tape on the inlet nipple. Thread the inlet nipple into the drop ear fitting and hand-tighten inlet nipple should project no more than 5/8" from the finished wall. Slide the upper mounting plate onto the inlet nipple.
3. Mark the location of the mounting screws. Remove the upper mounting plate from the inlet nipple. **Note: Ensure that there are not plumbing, electrical or other obstructions behind the wall at these locations.**
4. Drill 2-1/4" holes by 1-1/4" in depth at the marked locations. Be careful not to drill beyond the 1-1/4" as this may puncture a waterline behind the wall. Insert the wall anchors.



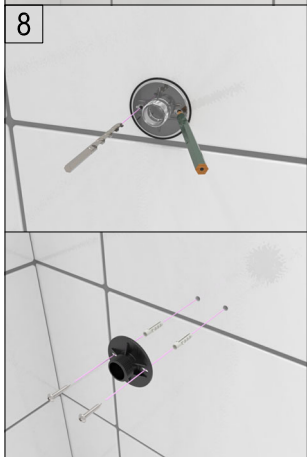
5. Apply Teflon tape on the nipple. and thread the upper mounting plate, secure the plate with the Phillips head screws (included).



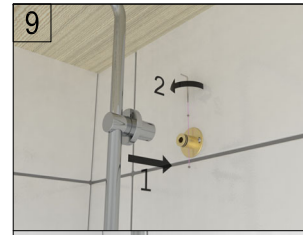
6. Insert the shower rod into the top tee. Adjust the position, and then tighten the hex screw using an Allen Wrench.



7. Mark the mounting position of the lower mounting plate with a pencil and remove the shower riser assembly.



8. Drill 2-1/4" holes by 1-1/4" in depth at the marked locations. Be careful not to drill beyond the 1-1/4" as this may puncture a waterline behind the wall. Insert the wall anchors and attach the mounting plate using the included Phillips head screws.



9. Insert the shower riser into the upper mounting plate and the lower mount. Then use the Allen wrench to tighten the set screw.



10. Install the rubber washer into the rain shower head and then connect to the shower arm.



11. Insert the rubber washers into the two ends of the hose. Connect the hexagonal nut end to the swivel joint, connect the tapered end of the shower hose to the hand shower. Insert the handheld shower into the hand shower holder.



12. Installation complete.