

KINGSTON

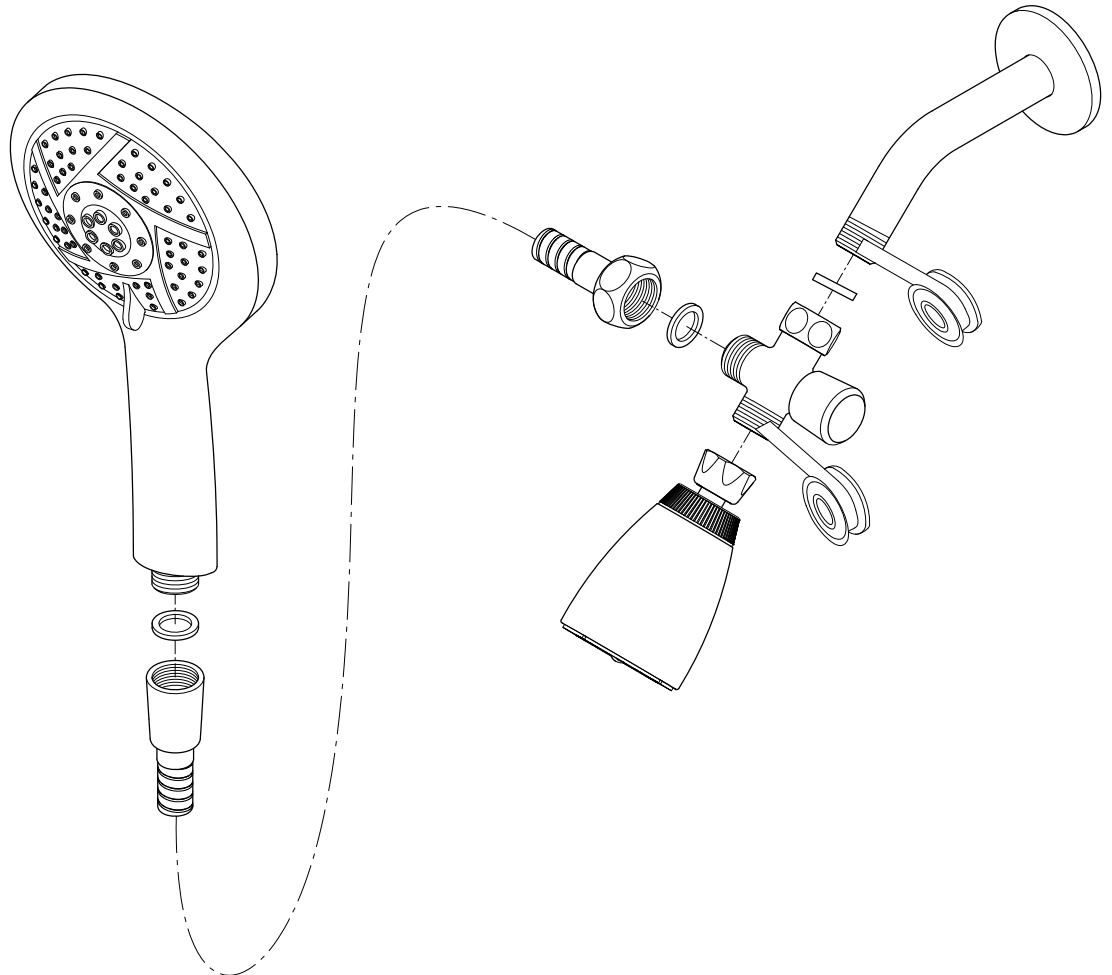
KITCHEN & BATH

INSTALLATION INSTRUCTIONS

Shower Arm Diverter

Instructions:

1. Remove showerhead, Apply Teflon tape to threads on shower arm as well as the threads on the diverter.
2. After inserting the rubber washer, thread diverter onto showerarm.
3. Thread shower hose onto the bottom outlet on the diverter.
4. Open hot and cold shower valves and let water run for 30 seconds or more from each outlet, this will clear any debris from the line.
5. Thread showerhead to the side outlet.
6. Thread handshower to the end of the hose.



www.kingstonbrass.com

TOLL-FREE CUSTOMER SERVICE: 1-877-2-KBRASS

TECHNICAL SUPPORT E-mail: service@kingstonbrass.com

12775 Reservoir Street, Chino, CA 91710

NOTICE

Failure to follow all directions may cause leaks
which may result in water damage

CAUTION

Failure to follow all installation directions may
cause product to detach from the wall and
cause serious injury

© 2023-11-T Kingston Brass